



NEW COMMUNITY MEDICAL CENTER TO OPEN IN CITY CENTER IN APRIL 2019.



For more than 30 years, the current Community Medical Center in Honson has been utilized by citizens for emergency medical care when general clinics are closed (i.e. holidays, the new year holiday season, weeknights and weekends) as the “Emergency Care Center for Holidays and Nights.” But, due to several problems, including an increasing number of users of this facility each year, an insufficient parking lot, and insufficient designs to cope with the barrier-free requirement, it was decided that the facility will be moved to 3-4-23 Chigasaki.

This new Community Medical Center is a composite facility of the offices of the Chigasaki Medical Association, the Chigasaki Dental Association and the Chigasaki-Samukawa Pharmaceutical Association, and will open in April, 2019.

Address: 3 -4-23 Chigasaki, Chigasaki, Kanagawa

Phone number: Not fixed yet. Please check the number in a March 15 issue of *Public Information Chigasaki*.

GORGEOUS FLOWERS AT HIMURO TSUBAKI TEIEN

Himuro Tsubaki Teien is a garden in Chigasaki well-known for its around 1300 trees of camellias, pine trees and roses. Red, white and pink camellia blossoms are in full bloom in the around 2800 square meter garden-- especially “himuro setsugekka,” a very rare species with white and pink colors and streaks of deep red. The best time to see the over 200 different kinds of camellia is from the end of February to the end of March. Why don't you go and find your favorite one there? Spring is just around the corner.

Address: Higashikaigan-Minami 3-2-41 Hours: 9 a.m. - 5 p.m. Entrance fee: Free of charge

Closing dates: Mondays (or the day after if Monday is a holiday) *The facilities will be open through March.

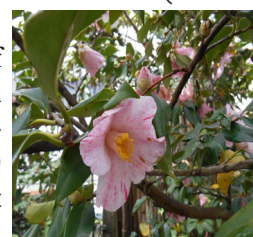
FORMER HIMURO FAMILY OWNER'S HOUSE REGISTERED AS A TANGIBLE CULTURAL PROPERTY



The former Himuro family owner's house in Higashikaigan-Minami, Chigasaki was registered as tangible cultural property by the Minister of Education, Sport, Culture, Science and Technology on Nov. 2 last year. This is the fourth one in Chigasaki. The house is acclaimed as a building that conveys trends of the early Showa era and aspects of suburban villa development. The two-story wooden building is located in the northern part of the site and was built in 1935.

The west part of the house has western-styled rooms with wooden floors and open structures, while the east part features a sophisticated Japanese design, with Japanese-style rooms with a *tokonoma* (alcove) and slacken slope eaves. It has a vent hole to take advantage of the gap between the western styled rooms and Japanese styled ones and get fresh air. The building was originally the dwelling of Shoji Himuro, the vice president of Mitsui Real Estate Company, and his wife, Hanako.

Her father, Chuya Yoshida, built the house in an area popular for suburban villas at that time. After the Himuros inherited it, Shoji added Japanese-style single-story rooms and a broad veranda in the east part in 1960 to enjoy the changes in seasons in the garden. The building and garden were donated by their successor to Chigasaki in 1991, but at present only its exterior and the garden are open to the public as a part of the Himuro Tsubaki Teien (Himuro Camellia Garden).



THE 64TH ŌOKA FESTIVAL



Tadasuke Ōoka was a famous judge in the Edo Period. His family and their successors ruled over the Tsutsumi area of Chigasaki.

After Ōoka died at 75 years old in 1751, he was given the honorary court rank of Junior Fourth

Rank (従四位 in Japanese, these court ranks were decorations from over 1000 years ago awarded to samurai and aristocrats) in 1912 for his many achievements from the Japanese government and a conferment festival was held at his grave the next year. This is said to be the origin of Chigasaki's Ōoka Echizen festival.

Although temporarily interrupted by World War II and the Great Kanto Earthquake, the festival was restarted in 1956 and has continued since then.

A memorial service held at his grave and the Echizen parade are popular events of the festival enjoyed by both locals and visitors to Chigasaki.

The 64th Echizen Parade will be held on May 19. During the parade, the mayor will ride a horse, and performers dressed as samurai, warriors, and ninjas will follow in the procession.



IAC JAPANESE LANGUAGE CLASS NEW YEAR'S PARTY



During the New Year, not only families but also friends and coworkers get together for New Year's parties where people can have fun while eating, talking and drinking. Games and karaoke are also popular activities.

The International Association of Chigasaki's Japanese language classes (IAC) held a New Year's party in the Community Hall on Sunday, Jan. 6. About 50 foreigner students from 12 different countries and 13 volunteer teachers gathered at the Community Hall.

After enjoying various food and beverages, the attendees played Japanese games like karuta, where the player has to slap the card that's called, and fuku-warai, a game like pin the tail on the donkey, where blindfolded players attempt to put cutouts of eyes, a nose and mouth on a blank face. At the end of party the guests sang songs from their respective countries.



EVENTS & ACTIVITIES IN TOWN

MARCH

10 (SUN) 1-4 p.m.

22nd JAPANESE SPEECH CONTEST FOR FOREIGNERS

The contest will be held at the city's Youth Hall in Jyukkenzaka (in front of Umeda Junior High School).

23 (SAT) and 24 (SUN) 10 a.m.-4 p.m.

7th GOTOCHI-KYRA PARTY

Many local characters, including Chigasaki's very own Eboshimaro, will gather together at Chuo Park.

MAY

11 (SAT) and 12 (SUN) 9 a.m.-5 p.m.

CHIGASAKI ALOHA MARKET

The market will take place at Chigasaki Park near the baseball field. Many Hawaiian goods, such as aloha shirts, beverages, and trinkets will be sold.

18 (SAT) and 19 (SUN) 9 a.m.-5 p.m. ŌOKA ECHIZEN FESTIVAL

You can watch a big parade with marching bands, baton twirlers, portable shrine and people wearing Edo era costumes in the procession around Chigasaki station from 1 to 3 p.m. on the 19th (SUN).

18 (SAT) and 19 (SUN) 10 a.m.-4 p.m.

CHIGASAKI INDUSTRIAL FAIR 2018

Many local companies will display their products in the front of the Universal Gymnasium.

19 (SUN) 10 a.m.-5 p.m. SPRING CITIZEN FESTIVAL

Many groups will sell food, beverages, flowers, plants, and handicraft products at Chuo Park. On the stage, various dances and musical performances will be performed by various groups.

25 (SAT) and 26 (SUN) 10 a.m.-4 p.m. SHONAN FESTIVAL

The festival will take place within the Southern Beach Chigasaki district. Live music and hula dancing will be performed in the area and various foods, beverages and handicrafts will be sold.



Lawyer Advice

-LAWYER-

Question:

I'm working as a temporary employee. I am persistently asked by my boss to go out to dinner together. Is this not sexual harassment?

Answer:

Sexual harassment means sexual behavior against a worker's will. In Japan, employers are obliged to take necessary and appropriate measures against sexual harassment, such as building a system to respond to complaints and taking appropriate measures for both victims and the perpetrator.

Victims can claim damages against perpetrators. In some cases, victims can pursue the company's responsibility. And this does not depend on the employment status; i.e., if you are a regular, temporary or part-time employee.

It seems that inviting someone out for dinner is not often recognized as sexual behavior. But depending on the circumstances, such as persistently inviting someone late at night, it may be subject to be considered as sexual harassment. Instead of suffering alone, I recommend you consult a lawyer.



MEET OUR NEW MAYOR HIKARU SATO

Hikaru Sato was elected as the new Chigasaki Mayor in the election on Nov. 18, 2018 after the former Mayor Nobuaki Hattori passed away suddenly on Oct. 4. We talked with him about his intentions for Chigasaki at the Mayor Reception Office on the fifth floor of City Hall.

CB: What is your personal history?

HS: I was born in Chigasaki in June, 1969. I graduated from Umeda Elementary School and Umeda Junior High School. I entered the architectural course of Kanagawa Prefectural Fujisawa Industrial High School, because my elder brother studied civil engineering there. Those days, baseball was so popular. I played it from elementary school and joined the school's baseball team and was a pitcher for the high school.

After graduating from high school, I went to Ferris State University in Michigan, USA, and studied facility management as well as architectural engineering. Since I preferred the local city, I decided to stay in the local town in Michigan state. Even though it was terribly cold there in winter, I enjoyed skiing and sometimes went to a big city, like Chicago, in the neighboring state, Illinois, by car.

CB: What is your history as a politician?

HS: After graduating from university in 1994, I came back to Japan. I became the secretary of House Representative member, Yohei Kono, but I was elected as a member of the Kanagawa Prefectural Assembly in 1999. I assumed my role as speaker in 2017. Therefore, totally I've served as a member for 19 years.



CB: What are your resolutions for Chigasaki City as mayor?

HS: I want to strengthen the assistance measurements of childcare; for example, to extend the charge-free period of childcare from the current sixth grade of elementary school to third grade of junior high school. Secondly, I want to conduct a school-feeding service at all junior high schools in Chigasaki. Finally, I eagerly want Chigasaki to be a major urban area like Yokosuka City, because many services will become familiar to citizens due to transition of powers from Kanagawa Prefecture to Chigasaki City, like when Kanagawa Prefecture's Health Care Center moved to Chigasaki's City Hall last year.

CB: It is expected that the number of foreigners from overseas will increase in Japan due to the revision of the Immigration Control Act. So, how will the Chigasaki city gov-

ernment manage this matter?

HS: The city published the Guidebooks for Foreign Residents in Chigasaki City in affable Japanese last June and also revised the easy-to-understand Japanese disaster prevention leaflets last December.

CB: What do you think about the sister-city relationship between Chigasaki City and Honolulu City?

HS: I think it is good to dispatch young people to Hawaii, because it is said recently that young people do not study abroad. I hope the dispatched young boys and girls will be a bridge between Japan and the USA in the near future.

CB: Finally, do you have any requests for the International Association of Chigasaki (IAC)?

HS: The Tokyo Olympic Games will be held in 2020 and it's expected that many foreign tourists will come to Chigasaki, because the yacht race will be held at Enoshima in Fujisawa. So, I hope the members of IAC would make something for them.

CB: Thank you for allowing us to interview you with your busy schedule. We hope your experience of staying a long time in the USA will reflect in municipal government.

SOSAKU HANGA EXHIBITION

Come and see the sosaku hanga world at Chigasaki City Museum of Art!

A sosaku hanga exhibition will be held at Chigasaki City Museum from Feb. 10 to Mar. 24 as the fourth part of the 20th anniversary of the museum's founding. About 180 works by 20 woodblock artists which were made in the late Meiji era, Taisho era and early Showa era are displayed. While Japanese ukiyo-e and shin hanga in the Meiji and Taisho eras were produced with the traditional division of labor between artists, carvers, printers and publishers, sosaku hanga are drawn, carved and printed all by the woodblock artists themselves. Between 1910 and 1920, young 20-something artists like Kanae Yamamoto, Kiyoshi Hasegawa and Koshiro Onchi made significant motions to reflect the originality of printmakers. Their works include *Gyofu* (Fisherman) by Yamamoto, *Onna no Kyouzou* (Women's Breast) by Hasegawa, and *Wakare to Nozomi to 3* (Separation and Hope and 3) by Onchi. Under the strong influence of overseas artistic thoughts, with keen senses and critical spirits, they and their colleagues created sosaku hanga to share their eras. Please enjoy seeing the process in which Japanese sosaku hanga became an established art genre.

Opening hours: 10 a.m. - 5 p.m.

Closed days: Mondays (or the next day if Monday is a holiday) and March 22



Kanae Yamamoto (Bretonne)
1920 woodcut housed in the
Ueda City Museum of Art

CROWDING OF CITY HALL EXPECTED IN LATE MARCH AND EARLY APRIL

The counters at Chigasaki City Hall are expected to be crowded at the end of March and beginning of April due to the end and beginning of the fiscal year.

Please take the following precautions to avoid long waiting:



1) Avoid peak days and times

If possible, early March is recommended. Check the estimated crowd calendar attached. Mondays, days after a holiday, and Fridays will be crowded, with between 11 a.m. and 2 p.m. expected to be the most crowded.

***Attention: On March 9 and 23, only the Residents' Section and the Health Insurance and Pension Section will be open.**

2) Use branch offices

The Citizens' Counter Center, the Koide branch office, and all other branches are available for matters concerning certificates of residence, family registers, seal registration and income tax.

3) Use the convenience store grant service

If you have a My Number Card with an electronic

“basic resident” registration, you can also print certificates of residence and seal registration at convenience stores that have a multi-copier such as 7-Eleven, Lawson and Family Mart.

4) Use extra counters

Extra counters will be set up on March 30 and 31 from 8:30 a.m. to 5 p.m. Visit the city website for more information about extra counters.

2019	Mon	Tue	Wed	Thu	Fri	Sat	Sun
Feb. /Mar.	25	26	27	28	1	2	3
	4	5	6	7	8	9 8:30~12:00	10
	11	12	13	14	15	16	17
Mar.	18	19	20	21	22	23 8:30~12:00	24
	25	26	27	28	29	30 8:30~17:00	31 8:30~17:00
Apr.	1	2	3	4	5	6	7

Remarks:

	Very crowded		Slightly crowded
	Crowded		Closed

ON THE 2033 GARBAGE DISPOSAL CRISIS

The final landfill disposal site in Tsutsumi district, Chigasaki, will become unusable by 2033; therefore, we must tackle waste reduction.

About 25 percent of household waste is NOT waste, including recyclable plastic containers and bottles, as well as recyclable paper and others. It is essential to separate garbage properly in order to reduce household waste.

In Chigasaki, a large amount of the ash left after burning waste is sent to be disposed of at the disposal site in Tsutsumi district, but this site is only available until 2033. By then, the old garbage incineration facilities will require maintenance. Surprisingly, the treatment and proper disposal of garbage requires more than 3 billion yen every year—and it will increase due to the fees to repair the old garbage incineration facilities and recycle the ash.

Chigasaki City encourages residents to implement the four R's in their daily lives to help reduce waste and increase recycling activities.

What are the “four R's”?

Refuse - Don't take it if you don't need.

Reduce- Reduce waste by cherishing things.

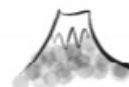
Reuse- Give it to someone before you throw away.

Recycle- Use resources by following the garbage separation rule.

To tackle waste reduction, Chigasaki is considering asking residents to utilize the four R's, creating a new recycle system, charging for garbage and collecting garbage from each house separately.



Ask Fuji-san



Dear Fuji-san,

Last year, I was invited to a hanami in Tokyo by my friend who lives in Tokyo. I learned Japanese people like to meet up with friends and eat and drink under the cherry blossoms. It was fun and I want to invite my friends to Chigasaki and do the same. However, I don't know the places where it is allowed to do hanami in Chigasaki. Do you have any recommendations?

Thanks, Sakura-lover

Dear Hans,

I would say hanami is one of best things to do in Japan and the cherry blossoms in Japan are splendid.

I would recommend the following places in Chigasaki:

1. Chigasaki Central Park. This park is 5 minutes away by foot from Chigasaki station. There is space to have picnics in the center of the park. There is also a public bathroom.

2. Satoyama Park. This park is located in the north area of Chigasaki. You can access the park by bus or car.

This park has a playground, BBQ facilities, and some areas have cherry blossom trees. There is a public bathroom and parking lot. To get there, board the bus bound for “Bunkyo Daigaku” from the north exit of Chigasaki station and get off at Serizawa Iriguchi.

The park is a five-minute walk from there. For more information, check <http://www.kanagawa-park.or.jp/satoyama/map.html>

Enjoy, Fuji

EDITORIAL TEAM (In alphabetical order):

Sosuke Akutagawa, Nozomi Hayashi, Zachary Hillenbrand, Setsuko Isa, Takeo Ishii, Narumi Kaneko, Yasuo Kurita, Masumi Miwada, Shuhei Miyake, Seiji Nakane, Emi Tabuchi, Aymui Yamasaki, and Kiyokazu Yokosawa. Back issues are available on the IAC website [<http://www.chigasaki-iac.org/>] or the Chigasaki City website.

Inquiries: info.chigasakiibreeze@gmail.com